



Predator®

Sewer Cleaning Hose Products



ENGINEERING YOUR SUCCESS.

Parker Sewer Hoses Reduce the Hazards of Sewer Cleaning

The Parker sewer cleaning hose system offers the sewer cleaning industry products that no other manufacturer catalogs. Available in 3 different options, the Predator® hose maintains its reputation by delivering the highest level of quality and rugged performance in the industry. Whether your application calls for lateral drain cleaning, water jetting or sewer cleaning service, Parker has the hoses, fittings, equipment and system support to do the job.

Parker's expertise does not end with sewer cleaning hose. Supplementary products available from Parker include: adaptors & tube fittings, brass fittings, hydraulic rubber hose, industrial & vacuum hose, and thermoplastic hose & tubing. With more sewer cleaning and fluid handling product opportunities than any other manufacturer, Parker has been the choice of the industry for many years.

Industry Safety:

Parker has created a field hose certification program: "Recommended Practices for Selecting, Mounting, Inspecting & Repairing Sewer Cleaning Hose Assemblies" available thru the Parker Parflex division or your local Parker distributor.

Parker also participates in the industry standard color coding system.



ALL industry standard hoses feature:

- **Orange hose cover** = 2,500 psi maximum working pressure
- **Blue hose cover** = 3,000 psi maximum working pressure
- **Green hose cover** = 4,000 psi maximum working pressure

Twin Line Hose:

For large water volume applications at high working pressures, Parker has the capability of bonding long lengths of hose for customized requirements.



Customer Values:

- Only Parker products feature dark gray core tubes for hose and dark gray identification of fittings, mender and hose assembly equipment
- Twin line hose available for large water volume/high pressure applications
- Standard industry color coding for easy identification
- Sturdy wooden reels minimize damage during transport, resist weathering, are easy to handle and provide easy pay-out from the factory reel to the vehicle reel
- Field hose certification program ensures quality

S5N - Predator® Hose

Water Jetting/Lateral Cleaning



Features

- Easily identified lime green cover signifies 4000 psi constant pressure
- Slim profile and light weight provide easy handling and routing
- High-pressure water equipment for cleaning or debris removal in lateral sewer lines

Series S5N

[Visit the webpage](#)

Part Number	Nominal I.D.		Maximum O.D.		Maximum Working Pressure		Minimum Bend Radius		Weight		Permanent Series
	inch	mm	inch	mm	psi	MPa	inch	mm	lbs/ft	kg/mtr	
S508N	1/2	12.7	0.81	20.6	4000	28	4	102	0.16	0.24	56

Construction

- Tube: Gray Nylon
- Reinforcement: Aramid Fiber
- Cover: Polyurethane

Fittings

- 56 Series
- For most Parker products, Crimp Die Selection charts are found online at www.parker.com/crimpsource

Colors

- Green

Operating Parameters

- Temperature Range: -40°F (-40°C) to 135°F (57°C)
- Vacuum Rating: 28 inch Hg
- Change in length at Max. Working Pressure: +/-2%
- Min. Burst Pressure is 4x Max. Working Pressure at 73°F (23°C)

Notes

- Perforated cover
- All standard assembly lengths coupled with rigid male pipe (NPT) each end
- Not for use in hydraulic applications



S6 – Predator® Hose

Sewer Cleaning



Features

- Easily identified orange cover signifies 2500 psi constant pressure
- Bonded construction provides excellent kink resistance and flexibility
- High-pressure and high-volume water equipment for cleaning or debris removal in large sewer lines

Series S6

[Visit the webpage](#)

Part Number	Nominal I.D.		Maximum O.D.		Maximum Working Pressure		Minimum Bend Radius		Weight		Permanent Series	
	Natural	inch	mm	inch	mm	psi	MPa	inch	mm	lbs/ft		kg/mtr
S612		3/4	19.1	1.14	29	2,500	17.2	4	102	0.29	0.43	SQ/HY
S616		1	25.4	1.41	35.8	2,500	17.2	6	152	0.38	0.57	SQ/HY

Construction

- Tube: Gray Copolyester
- Reinforcement: Fiber
- Cover: Polyurethane

Fittings

- SQ Series (Swage Only) HY Series - Fittings available from Parker Hose Products Division
- For most Parker products, Crimp Die Selection charts are found online at www.parker.com/crimpsource

Colors

- Orange

Operating Parameters

- Temperature Range: -40°F (-40°C) to 135°F (57°C)
- Vacuum Rating: 28 inch Hg
- Change in length at Max. Working Pressure: +/-2%
- Min. Burst Pressure is 4x Max. Working Pressure at 73°F (23°C)

Notes

- All standard assembly lengths coupled with rigid
- male pipe (NPT) each end
- Not for use in hydraulic applications
- Perforated cover

S9 – Predator® Hose

Sewer Cleaning



Features

- Easily identified blue cover signifies 3000 psi constant pressure
- Bonded construction provides excellent kink resistance and flexibility
- High-pressure and high-volume water equipment for cleaning or debris removal in large sewer lines

Series S9

[Visit the webpage](#)

Part Number	Nominal I.D.		Maximum O.D.		Maximum Working Pressure		Minimum Bend Radius		Weight		Permanent Series	
	Natural	inch	mm	inch	mm	psi	MPa	inch	mm	lbs/ft		kg/mtr
S912		3/4	19.1	1.15	29.2	3,000	20.7	4	102	0.3	0.45	SQ/HY
S916		1	25.4	1.47	37.3	3,000	20.7	8	203	0.46	0.68	SQ/HY

Construction

- Tube: Gray Copolyester
- Reinforcement: Fiber
- Cover: Polyurethane

Fittings

- SQ Series (Swage Only) HY Series - Fittings available from Parker Hose Products Division
- For most Parker products, Crimp Die Selection charts are found online at www.parker.com/crimpsource

Colors

- Blue

Operating Parameters

- Temperature Range: -40°F (-40°C) to 135°F (57°C)
- Vacuum Rating: 28 inch Hg
- Change in length at Max. Working Pressure: +/-2%
- Min. Burst Pressure is 4x Max. Working Pressure at 73°F (23°C)

Notes

- All standard assembly lengths coupled with rigid
- male pipe (NPT) each end
- Not for use in hydraulic applications
- Perforated cover

Fittings

Die Selection & Swage Specification Chart

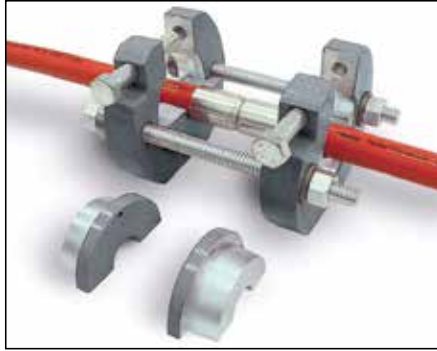
Swage Data For Sewer Cleaning Hose (SQ-101-SW SWAGE MACHINE ONLY)

Hose Type	Hose I.D. inch	Male Pipe			Mender/Splicer		Swage O.D. +/- .015 inch	Swage Length inch
		Fitting P/N	Die P/N	Pusher P/N	Fitting P/N	Die P/N		
S508N	1/2	-	-	-	1HU55-8-8	SQ-101-08S5S	0.850	0.750
S612	3/4	101SQ-12-12	SQ-101-12S6/S9	SQ-101-12P	1HUSQ-12-12	SQ-101-12S6/S9	1.172	1.109
S616	1	101SQ-16-16	SQ-101-16S6	SQ-101-16P	1HUSQ-16-16	SQ-101-16S6	1.445	1.156
S912	3/4	101SQ-12-12	SQ-101-12S6/S9	SQ-101-12P	1HUSQ-12-12	SQ-101-12S6/S9	1.172	1.109
S916	1	101SQ-16-16	SQ-101-16S9	SQ-101-16P	1HUSQ-16-16	SQ-101-16S9	1.488	1.156

Comments:

- Two dies required when swaging a mender/splicer fitting. A pusher is not required when swaging a mender/splicer fitting.
- One die and one pusher required when swaging a male pipe fitting.
- End fittings cannot be swaged on S5N series hose. Only mender/splicers can be swaged.

The information covered in the Swage Specification & Tool Selection Chart pertains to steel, stainless and brass hose fittings. Swage diameter roundness shall not vary by more than .010". Swage diameters are measured in the center to the crimp area. Parflex Division reserves the right to alter swage specifications.



SQ-101-SW SWAGER/MENDER

The SQ-101-SW manual swaging system is for field assembly or repair of PREDATOR® S6 and S9 sewer cleaning hose. The SQ-101-SW swage machine is designed to give municipalities, sewer cleaning contractors and other qualified users the ability to make efficient field repair and extend the life of hose assemblies. This swager

accommodates both mending of hoses which need repair toward the interior of the length, as well as the installation of end fittings. For mending applications, two sets of dies are required.

MINIKRIMP™ CRIMPER

The MiniKrimp™ is a lightweight crimper which permanently attaches end fittings to all of the hoses in the Parker sewer

cleaning hose offering. The base crimper unit is available with an optional hand pump or air/hydraulic pump. Both configurations are portable enough to go to any job site and are easy-to-use, yet provide secure attachment of the fittings for demanding, high pressure sewer cleaning applications.

(Not for splicers/menders)

SAFETY

Parker sewer cleaning hose products have been designed, manufactured and tested to meet the Specifications and Repair/Inspection Procedures for High Pressure Hose Used in Conjunction with Sewer/Catch Basin Cleaning Equipment, which was developed under the sponsorship of the National Solid Waste Management Association and the Waste Equipment Technology Association (WASTEC).

Parker PREDATOR® high pressure sewer cleaning hose may be repaired in service, depending on the application and condition of the hose. However, hose, fittings and assembly equipment from various manufacturers differ greatly and must never be interchanged. The color code

assigned to Parker sewer products is dark gray, and Parker hoses, identified by a dark gray inner tube, should be repaired only with specified Parker end fittings, Parker menders and Parker assembly equipment, according to Parker specifications. See www.parker.com/safety.

WARNING

Parker products are part of an engineered system which must be assembled and used in accordance with Parker instructions and limitations. Parker hose, fittings, menders and assembly equipment are designed into an effective and reliable assembly system and the use of substitutions, other than Parker products, may produce hose assemblies that will not meet rated performance. Failure to follow Parker instructions and limitations could lead to premature hose failures resulting in property damage, serious injury, or death. Visit www.parker.com/crimpsource for assistance with assemblies.

DANGER

FAILURE OR IMPROPER SELECTION OR IMPROPER USE OF THE PRODUCTS AND/OR SYSTEMS DESCRIBED HEREIN OR RELATED ITEMS CAN CAUSE DEATH, PERSONAL INJURY AND PROPERTY DAMAGE.

Before selecting or using any Parker hose or fittings or related accessories, it is important that you read and follow Parker Safety Guide for Selecting and Using Hoses, Fittings and Related Accessories (Parker Publication No. 4400 • B. 1).



Parker Hannifin Corporation
Parflex

Parflex Division
1300 North Freedom St.
Ravenna, OH 44266
phone (330) 296 2871
fax (330) 296 8433
www.parker.com/parflex

ENGINEERING YOUR SUCCESS.